

Digi TransPort® WR Family

Enterprise Class Wi-Fi to Cellular Routers

Flexible, enterprise class cellular routers for remote and mobile networking applications.



Overview

The Digi TransPort WR family of cellular routers offers an all-in-one mobile communications solution with true enterprise class routing, security and firewall. These multifunction cellular routers feature a flexible design with optional integrated Wi-Fi access point (with multi SSID) / Client, USB, serial and 4-port Ethernet switch, as well as a variety of configuration options including multiple serial ports (async or sync), GPS or I/O telemetry modules.

The Digi TransPort family offers an advanced routing, security and firewall feature set including stateful inspection firewall and integrated VPN. Enterprise class protocols incorporate BGP, OSPF and VRRP+, a patented technology built upon the popular VRRP failover standard providing true auto sensing, auto failure and auto recovery of any line drop.

Digi TransPort WR routers are ideal for transportation and mobile applications. Flexible power options include 11-58VDC barrel or Molex connectors for direct integration into vehicle applications.

Digi Remote Manager provides easy setup, configuration and maintenance of large installations of Digi TransPort devices.

Related Products



Digi TransPort® VC7400
VPN Concentrator

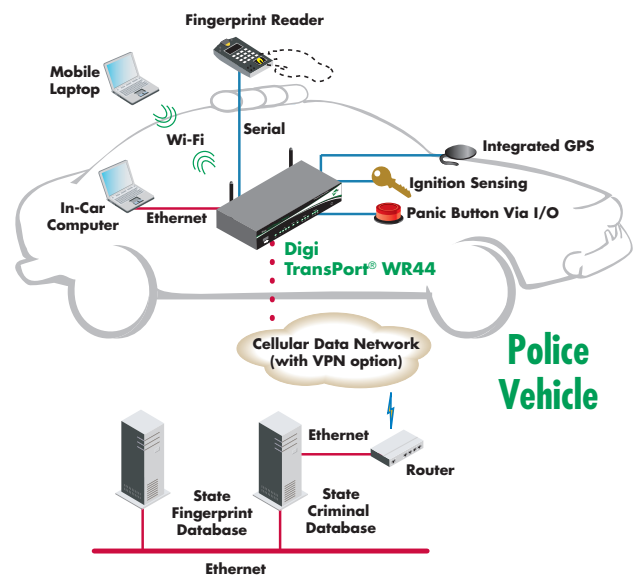


Digi Remote
Manager™



Accessories

Application Highlight



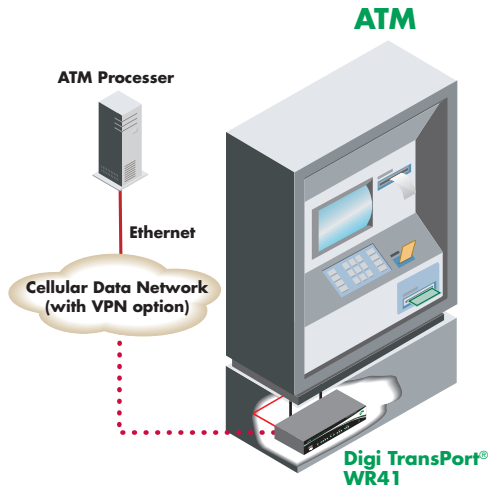
Features/Benefits

- Enterprise class cellular routers with advanced dynamic routing, security and firewall features
- Available in models optimized for rugged environments
- High speed cellular interfaces: GSM GPRS/EDGE/ HSPA/CDMA EV-DO
- Optional integrated 802.11b/g Wi-Fi access point and 4-port Ethernet switch
- Flexible interfaces including serial (async/sync), GPS, USB and telemetry, with flexible DC power options
- Powerful integrated end user programming
- Digi Remote Manager software for easy setup, configuration, and maintenance



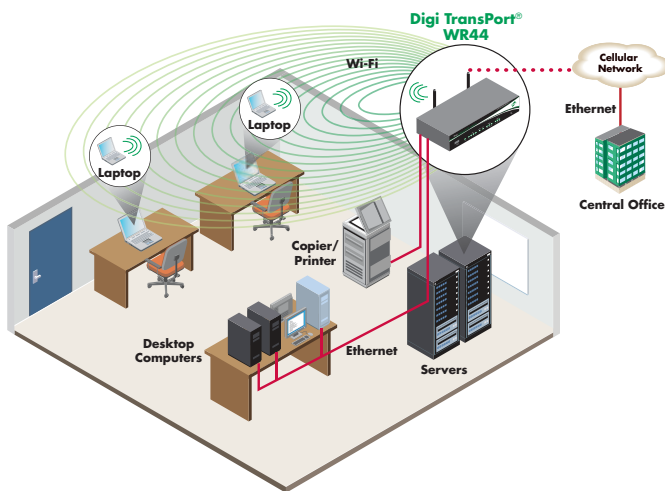
Choosing the Right WR Model for Your Application

Retail/POS and Finance/ATM: Digi TransPort WR41



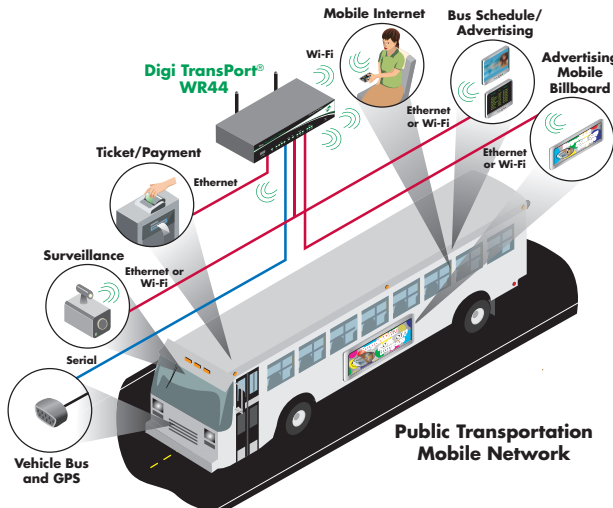
The Digi TransPort WR41's enterprise class features (including integrated VPN, dual SIM, sync ports, specialized protocol support), small form factor and PCI compliant "ready" features make it ideal for retail and finance applications. Applications include remote connectivity of smart card/credit card readers, ATMs and kiosks.

Remote Office: Digi TransPort WR44



Digi TransPort WR44 includes a full enterprise class cellular router (including VPN), integrated Wi-Fi access point and integrated 4-port Ethernet switch for an all-in-one remote site connectivity solution. It is ideal for satellite offices, disaster recovery and mobile office solutions.

Transportation: Digi TransPort WR44R



Bridging enterprise class router functionality and rugged features for transportation environments, the Digi TransPort WR44R supports entire Enterprise Mobile Networks including Wi-Fi access point, VLAN, integrated VPN, serial and Ethernet ports, and "auto-switch" from 3G to Wi-Fi client for least-cost routing when faster/less expensive networks are available. It is ideal for public transportation and public safety applications.

Specifications

Digi TransPort® WR44/WR44R

Digi TransPort® WR41

Interfaces

Serial

Async Port Type	1 DB-9 RS-232 built-in; 3 RJ-45 RS-232 (option)	1 RJ-45 RS-232 built-in; 3 RJ-45 RS-232 (option)
Sync Port Type	1 Sync/Async DB-25 RS-232/422/485 (option)	
Signal Support	TXD, RXD, RTS, CTS, DTR, DSR, DCD, RI (No DSR/RI for RJ-45 ports on WR41 & 3 port serial card; RS-422/485 and sync signals available on request)	
Flow Control	Software (XON/XOFF), Hardware supported	

Ethernet

Ports	4-port auto switch with auto MDI/MDX options (configurable non-switch/mini-switch modes)	1 Ethernet port, Auto MDI/MDX
Specifications	IEEE 802.3 10/100 Base-T (auto-sensing) Full or Half duplex	

Other

Wi-Fi (option)	802.11b/g access point and client mode; Open or shared key authentication; WEP (64 and 128 bit) encryption; WPA/WPA2 with Radius (WPA Enterprise and pre-shared keys); Support for multiple access point mode; 2 x 50 Ω male reverse SMA antenna connector (external); Transmit Power: 17 dBm ± 2 dBm; Receive Sensitivity: 54 Mbps OFDM, 10% PER, -70 dBm, 11 Mbps CCK, 8% PER, -83.5 dBm	
GPS (option)	50 channel GPS engine (-163 dB sens.); NMEA 0183 V2.3 sentence output; 50 Ω SMA antenna connector with +3.3VDC active antenna drive; NMEA stream to local serial port or over TCP/IP; Galileo ready	
Telemetry	1 x DI plus 1 x DIO built-in (via optional Molex connector); I/O telemetry module option (1 relay, 1 digital in, 4 digital out)	I/O telemetry module option (1 relay, 1 digital in, 4 digital out)
USB Host Port	1 Type A connector for expansion; Support for full or low speed	
Miscellaneous	ISDN (BRI) - v.120, X.75, v.110; DialServer (dial tone simulator); PSTN	

General Features

Status LEDs	DTE, Ethernet, Power on, Cellular link/activity, Signal strength, Wi-Fi	
Mounting	Bulkhead mount, Wall mount and DIN rail options available	
Security/VPN	RADIUS, TACACS+, SSL, SSLv2, SSLv3, FIPS 197, L2TP, (5 tunnels included - 50 max.); IPSec with IKEv1, IKEv2, ISAKMP; DES, 3DES and AES up to 256-bit encryption; Simple Certificate Enrollment Protocol (SCEP) for X.509 certificates, Open VPN and PPTP; IPSec/PPP/L2TP VPN Server support; IP pass-through	
Router/Firewall	Bridging, NAT/NAT-Traversal, NAPT forwarding; PPP, PPPoE, GRE; IP Routing Protocols: PPP, GRE, RIP (v1 & v2), OSPF, SRI, BGP; IP Failover: VRRP, VRRP+™; VLAN support; STP (Spanning Tree Protocol); Stateful inspection firewall with scripting; Modbus over UDP/TCP; DHCP; Dynamic DNS client compatible with BIND9/No-IP/DynDNS; Automatic failover/failback to second GSM network/Standby APN	
Sync/Specialty	Protocol switch; Sync tunneling: LAPB, RAW SNA, SNAIP, SLSw, IP/PPP over X.25; X.25/X.28; TPAD, APACS30, X.25, X.28, PAD, X.29, X.31, X.21, XOT, SSL	
Management	HTTP, HTTPS, FTP, SFTP, SSL, SMTP, SNMP (v1/v2c/v3), SSH, Telnet and CLI for web management; Remote management via software tool (option); SMS management, Protocol analyzer, Ability to capture PCAP files for use with Wireshark	
Local Programming	Python, ScriptBasic, Modbus TCP	
Dimensions (L x W x H)	5.7 in x 8.3 in x 1.6 in (145 mm x 210 mm x 40 mm)	4.7 in x 6.8 in x 1.3 in (12 cm x 17.3 cm x 3.2 cm)
Weight	1.98 lb (0.9Kg)	1.08 lb (0.49 kg)
Other	Standard dual SIM (SIM protection cover option); Conformal coating (option)	Standard dual SIM (SIM protection cover option)

RF Features

GSM Models

GPRS	GPRS Class 10, Quadband 850/900/1800/1900 MHz	
EDGE	GPRS Class 10/EDGE class 10, Quadband 850/900/1800/1900 MHz	
HSDPA/HSUPA/UMTS	850/900/1900/2100 MHz with Rx Diversity	
Antenna	HSDPA/HSUPA/UMTS: 2 X 50 Ω SMA male antennas, * GPRS/EDGE: 1 X 50 Ω SMA male antenna	

CDMA Models

CDMA/EV-DO Rev A	Dualband 800/1900 MHz with Rx Diversity; Optional multi-mode GSM/EV-DO Gobi support; 450 MHz, 3.1 Mbps down / 1.8 Mbps up, R-UIM support	
Antenna	2 x 50 Ω SMA male antennas	

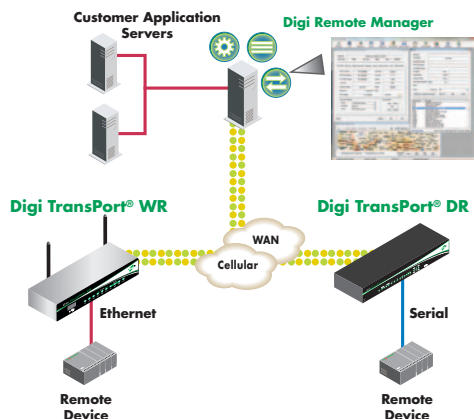
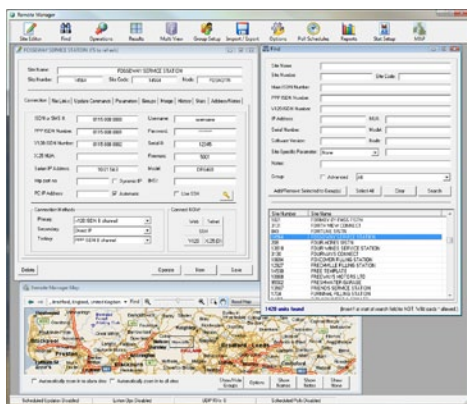
Specifications	Digi TransPort® WR44/WR44R	Digi TransPort® WR41
Power Requirements		
Power Input	11-58VDC	8-48VDC
Power Supply	100-240 VAC 50/60 Hz with barrel connector, Optional Molex connector with bare wire leads	100-240VAC 50/60 Hz with barrel connector, Optional barrel connector with bare wire leads
Power Consumption	15W @12VDC to WR44	6W @ 12VDC to WR41
Environmental		
Operating Temperature	WR44: -20° C to +55° C WR44 Extended Temp/WR44R: -25° C to +70° C	-20° C to +55° C; -25° C to +70° C with reduced cellular performance Wi-Fi models: -5° C to +55° C; -10° C to +70° C with reduced performance
Relative Humidity	20% to 95% (non-condensing)	
Ethernet Isolation	1.5 kV	
Serial Port Protection (ESD)	15 kV	
Approvals		
Mobile Certifications - GSM/UMTS	PTCRB, NAPRD.03, GCF-CC, R&TTE, EN 301 511	
Mobile Certifications - CDMA/EV-DO	CDG TIA/EIA-690, CDG TIA/EIA-98-E	
Wireless Carrier Certifications	Certified by most major carriers. See www.digi.com for current listing.	
Safety	UL 60950, CSA 22.2 No. 60950, EN60950	
Emissions/Immunity	CE, FCC Part 15 Class B (FCC identifier GGL-R1902G), AS/NZS CISPR 22, EN55024, EN55022 Class A	
Vehicle Related Certifications	2004/104/EC, 2005/49/EC, 2005/83/EC, 2006/28/EC, 72/245/EEC, ISO7637-2 Class C	

About Digi Remote Management

Features

- View of all remote devices and their connection status
- Automatic registration of newly connected devices
- Remote device configuration
- Actions include device grouping and scheduling of operations
- Monitoring of user specified events
- Device statistic and report generation
- Alarm generation and alerting
- Secure access to all devices from web browser, anywhere
- Remote reboot of device and default reset

Easy Remote Configuration and Management



Visit www.digi.com for part numbers.

DIGI SERVICE AND SUPPORT - You can purchase with confidence knowing that Digi is here to support you with expert technical support and a strong five-year warranty. www.digi.com/support

Digi International
877-912-3444
952-912-3444
info@digi.com

Digi International France
+33-1-55-61-98-98
www.digi.fr

Digi International KK
+81-3-5428-0261
www.digi-intl.co.jp

Digi International (HK) Limited
+852-2833-1008
www.digi.cn



91001613
A2/510

BUY ONLINE • www.digi.com



© 2009-2010 Digi International Inc. All rights reserved. Digi, Digi International, the Digi logo, the Making Wireless M2M Easy logo, Digi TransPort and Digi Remote Manager are trademarks or registered trademarks of Digi International Inc. in the United States and other countries worldwide. All other trademarks are the property of their respective owners. All information provided is subject to change without notice.