

Inlet with filter, IP65, front or rear mounting, fuseholder 5x20 mm, protection class I or II

Medical fuse drawer



new



Mounting from front side

Mounting from rear side

C14

C18



70° C

70° C



Description

- Panel Mount:
Screw-on version from front or rear side, Screws with sealing are included
- 4 Functions:
Inlet protection class I or II, Line filter in standard and medical version, Fuseholder for fuse-links 5 x 20 mm, IP 65 protection
- Quick connect terminals 6.3 x 0.8 mm

Characteristics

- Extreme robust design
- All single elements are already wired
- Screw type fuse carrier, slotted
Fuse drawer meets requirements of medical standard IEC/EN 60601-1
The fuse drawer can only be opened with the aid of a tool
The fuseholder is accessible from the equipment front
- With EMC-shield
- Especially for applications in rough environments
- Qualified for use in equipment according IEC/EN 60950

Other versions on request

- With solder terminals
- Class X1- and Y1-capacitors for enhanced withstand voltage
- Medical version M80
- Version with current rating 3 A

Weblinks

Approvals: www.schurter.com/approvals

RoHS: <http://www.schurter.com/rohs>

Technical Data

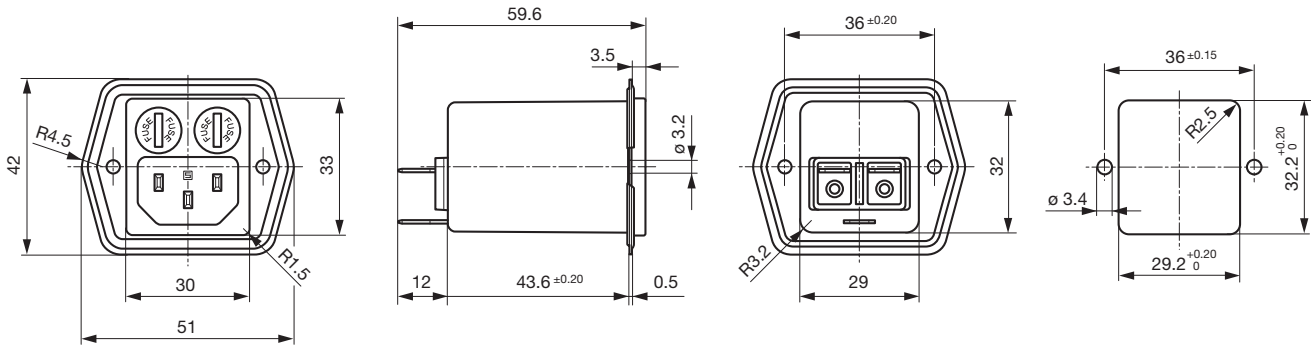
Ratings IEC	1 - 8 A @ Ta 40 °C / 250 VAC; 50 Hz
Ratings UL/CSA	1 - 8 A @ Ta 40 °C / 125 VAC; 60 Hz
Dielectric Strength	> 1.7 kVDC between L-N > 2.7 kVDC between L/N-PE Test voltage (2 sec)
Allowable Operation Temp.	-25 °C to 85 °C
Climatic Category	25/085/21 acc. to, IEC 60068-1
Degree of Protection	from front side IP 65 acc. to IEC 60529 from rear side IP 65 acc. to IEC 60529
Protection Class	Suitable for appliances with protection class I or II acc. to IEC 61140
Terminal	Quick connect terminals 6.3 x 0.8 mm
Panel Thickness s	Screw-on, max 3 mm Mounting screw torque max 0.8 Nm 2 screws M3 with sealing are provided
Material: Housing	PA / silicon / steel, UL 94V-0 black / metallic

Appliance-Inlet /-Outlet	C14/C18 acc. to IEC/EN 60320-1 UL 498, CSA C22.2 no. 42 (for cold condition) pin-temperature 70 °C, 8 A, Protection class I or II
Fuseholder	1 or 2 pole, Shocksafe category PC2 acc. to IEC 60127-6, for fuse-links 5 x 20 mm
Rated Power Acceptance @ Ta 23 °C	5 x 20: 1.6 W 1 pole/ 1,2 W 2-pole per pole
Power Acceptance @ Ta > 23°C	Admissible power acceptance at higher ambient temperature see derating curves
Line Filter	Standard/Medical Version, IEC 60939, IEC 60601-1, UL 1283, UL 544, EN 133 200, CSA C22.2 no. 8 Technical details
MTBF	> 2'800'000 h acc. to MIL-HB-217 F

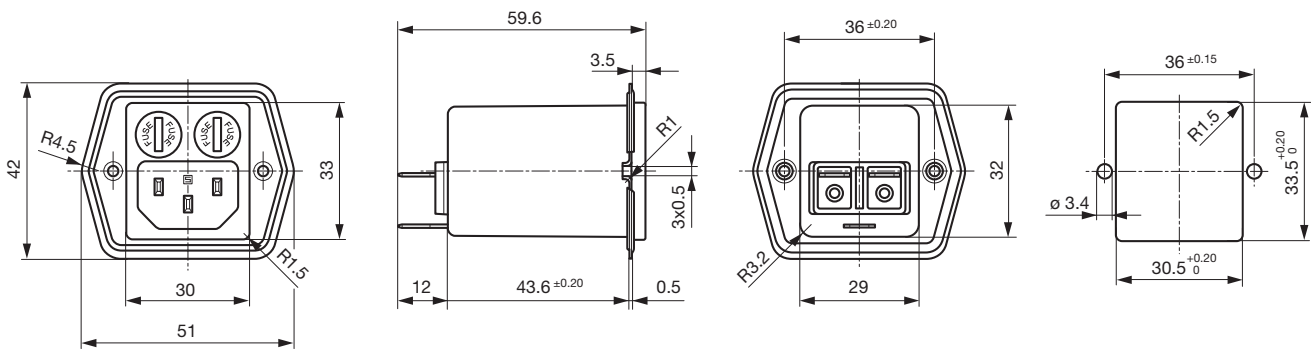
Dimensions

Mounting from front side

Length |-----| 59.6 mm



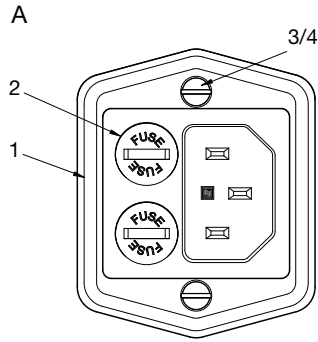
Mounting from rear side



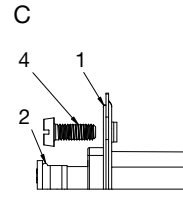
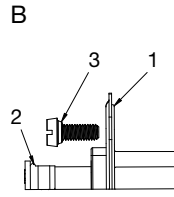
Technical Data of Filter-Components

Rated Current [A]	Filter-Type	Inductances	Capacitance	Capacitance	R [MΩ]
		L [mH]	CX [nF]	CY [nF]	
1	Standard Version	2 x 12	100	2.2	1
2	Standard Version	2 x 5.2	100	2.2	1
4	Standard Version	2 x 2	100	2.2	1
6	Standard Version	2 x 0.8	100	2.2	1
8	Standard Version	2 x 0.4	100	2.2	1
1	Medical Version (M5)	2 x 12	100	-	1
2	Medical Version (M5)	2 x 5.2	100	-	1
4	Medical Version (M5)	2 x 2	100	-	1
6	Medical Version (M5)	2 x 0.8	100	-	1
8	Medical Version (M5)	2 x 0.4	100	-	1

Mounting instructions



A) front view
 B) detail front mounting type
 C) detail rear mounting type



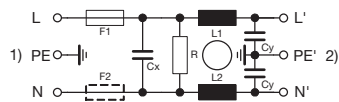
- 1) sealing of flange
- 2) sealing of fuseholder
- 3) sealing of screw hole (front mounting type: sealing ring on screw head)
- 4) sealing of screw hole (rear mounting type: sealing on screw thread)

Important:

- use supplied fuse caps (2) and mounting screws (3/4)
- optimal sealing requires even and solid panel opening
- recommended tightening torque for mounting screws (2/3/4): 0.5 - 0.8 Nm
- IP65 protection between the inlet and connector pins, but no IP rating between the connector pins and the plug of the power cord!

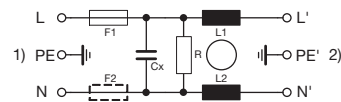
Diagrams

Standard version



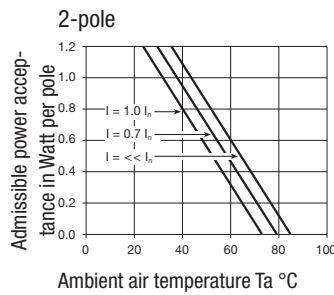
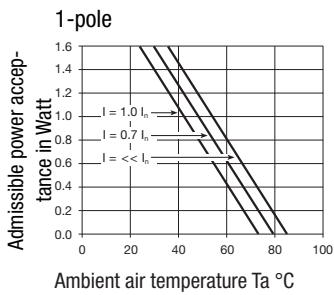
- 1) Line
- 2) Load

Medical version (M5)



- 1) Line
- 2) Load

Derating curves

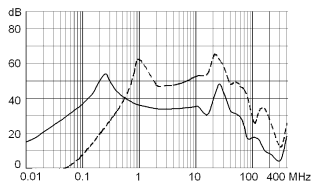


Attenuation loss

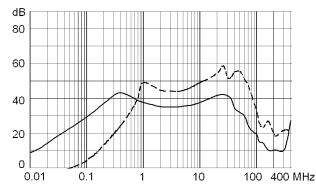
--- differential mode ____ common mode

Standard version

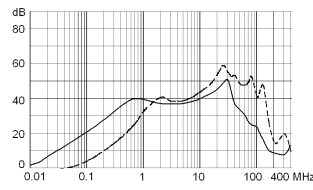
1 A



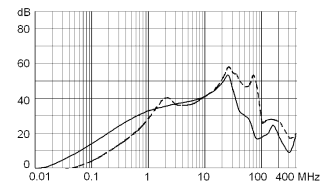
2 A



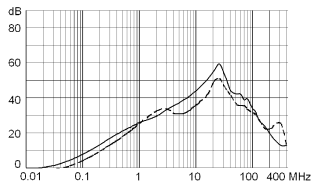
4 A



6 A

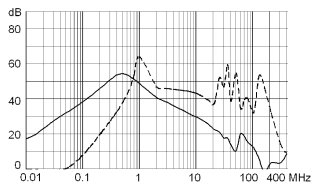


8 A

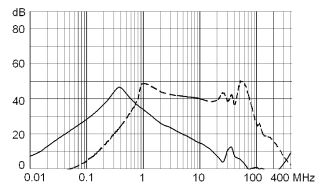


Medical version (M5)

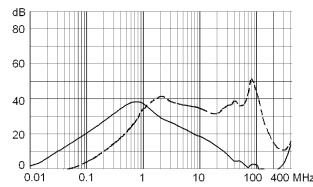
1 A



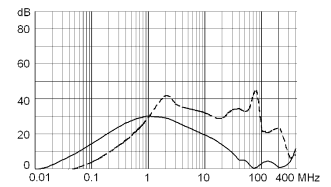
2 A



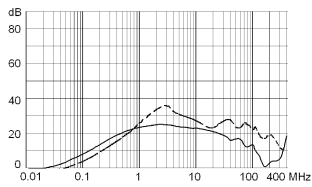
4 A



6 A



8 A



Variants

Rated Current [A]	Filter-Type	Screw-on version from front or rear for screws with nuts, or rivets	Screw-on version from rear with pre-formed, threaded holes for M3 screws	Protection Class	Fuseholder	Order Number
1	Standard Version		●	I	1 pole	5707.0101.113
2	Standard Version		●	I	1 pole	5707.0201.113
4	Standard Version		●	I	1 pole	5707.0401.113
6	Standard Version		●	I	1 pole	5707.0601.113
8	Standard Version		●	I	1 pole	5707.0801.113
1	Standard Version	●		I	1 pole	5707.0101.112
2	Standard Version	●		I	1 pole	5707.0201.112
4	Standard Version	●		I	1 pole	5707.0401.112
6	Standard Version	●		I	1 pole	5707.0601.112
8	Standard Version	●		I	1 pole	5707.0801.112
1	Standard Version		●	I	2-pole	5707.0101.313
2	Standard Version		●	I	2-pole	5707.0201.313
4	Standard Version		●	I	2-pole	5707.0401.313
6	Standard Version		●	I	2-pole	5707.0601.313
8	Standard Version		●	I	2-pole	5707.0801.313
1	Standard Version	●		I	2-pole	5707.0101.312
2	Standard Version	●		I	2-pole	5707.0201.312
4	Standard Version	●		I	2-pole	5707.0401.312
6	Standard Version	●		I	2-pole	5707.0601.312
8	Standard Version	●		I	2-pole	5707.0801.312
1	Medical Version (M5)		●	I	2-pole	5707.0103.313
2	Medical Version (M5)		●	I	2-pole	5707.0203.313
4	Medical Version (M5)		●	I	2-pole	5707.0403.313
6	Medical Version (M5)		●	I	2-pole	5707.0603.313
8	Medical Version (M5)		●	I	2-pole	5707.0803.313
1	Medical Version (M5)	●		I	2-pole	5707.0103.312
2	Medical Version (M5)	●		I	2-pole	5707.0203.312
4	Medical Version (M5)	●		I	2-pole	5707.0403.312
6	Medical Version (M5)	●		I	2-pole	5707.0603.312
8	Medical Version (M5)	●		I	2-pole	5707.0803.312
1	Medical Version (M5)		●	II	2-pole	5707.0103.413
2	Medical Version (M5)		●	II	2-pole	5707.0203.413
4	Medical Version (M5)		●	II	2-pole	5707.0403.413
6	Medical Version (M5)		●	II	2-pole	5707.0603.413
8	Medical Version (M5)		●	II	2-pole	5707.0803.413
1	Medical Version (M5)	●		II	2-pole	5707.0103.412
2	Medical Version (M5)	●		II	2-pole	5707.0203.412
4	Medical Version (M5)	●		II	2-pole	5707.0403.412
6	Medical Version (M5)	●		II	2-pole	5707.0603.412
8	Medical Version (M5)	●		II	2-pole	5707.0803.412

Packaging unit 10 Pcs

Accessory



Assorted Cover 0859.0047