

Inlet with filter for PCB mounting, fuse 2-pole, line switch 2-pole

Plug removal necessary for fuse replacement

new



C14



70° C



Description

- Panel Mount:
Screw-on mounting on PCB, from rear-side
- 4 Functions:
Inlet Protection class I, Line switch 2-pole, Fuseholder for fuse-links 5 x 20 mm 2-pole, Line filter in standard and medical version
- PCB solder terminals
- Alternative: version without line filter [DD21](#)

Characteristics

- Ultra-compact design. Ideal for low profile designs
- All single elements are already wired
- For added safety "Extra-Safe" fuse drawers are available
Fuse drawer meets requirements of medical standard IEC/EN 60601-1
The fuse drawer can only be opened with the aid of a tool
The fuseholder is accessible from the equipment front
- Ideal for application with high transient loads
- Qualified for use in equipment according IEC/EN 60950

Other versions on request

- Fuse drawer 1-pole, plus spare fuse case
- Fuse drawer 2-pole, with shorting bar
- Other rocker marking
- Line switch, illuminated
- Line switch 1-pole
- Medical version M80
- Protection class II, 70°C

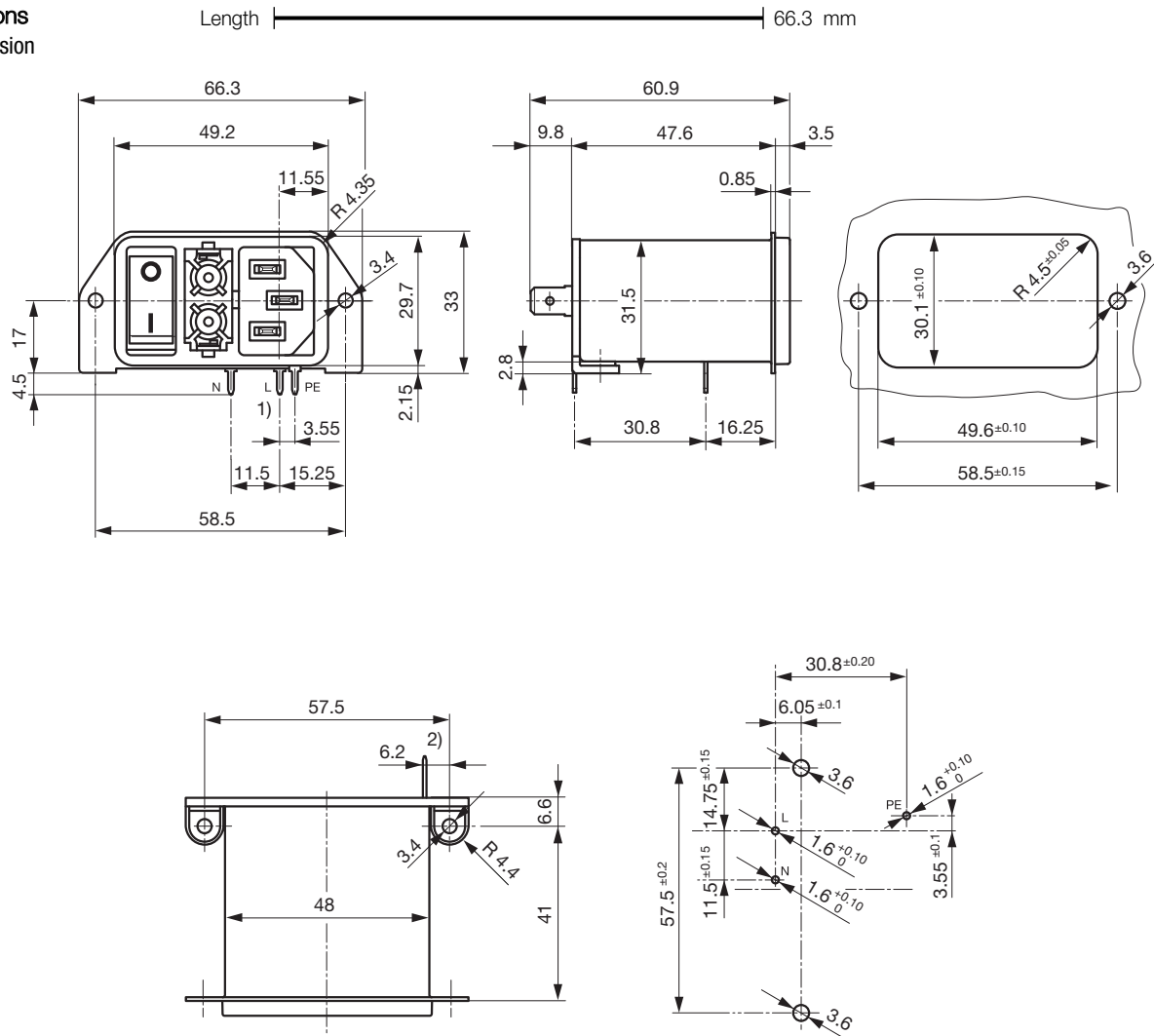
Weblinks

Approvals: www.schurter.com/approvalsRoHS: <http://www.schurter.com/rohs>

Technical Data

Ratings IEC	1 - 10 A @ Ta 40 °C / 250 VAC; 50 Hz
Ratings UL/CSA	1 - 10 A @ Ta 40 °C / 125 VAC; 60 Hz
Dielectric Strength	> 1.7 kVDC between L-N > 2.7 kVDC between L/N-PE Test voltage (1 min/50 Hz)
Allowable Operation Temp.	-25 °C to 85 °C
Climatic Category	25/085/21acc. to, IEC 60068-1
Degree of Protection	from front side IP 40 acc. to IEC 60529
Protection Class	Suitable for appliances with protection class I acc. to IEC 61140
Terminal	For PCB mounting 3 mm additional quick connect 6.3 x 0.8 mm
Panel Thickness s	Screw-on: max 3 mm Mounting screw torque max 0.5 Nm
Material: Housing	Thermoplastic, black, UL 94V-0

Appliance-Inlet /-Outlet	C14 acc. to IEC/EN 60320-1 UL 498 CSA C22.2 no. 42 (for cold condition) pin-temperature 70 °C, 10 A, Protection class I
Fuseholder	2-pole, Shocksafe category PC2 acc. to IEC 60127-6, for fuse-links 5 x 20 mm
Rated Power Acceptance @ Ta 23 °C	5 x 20: 1.6 W (2-pole)
Power Acceptance @ Ta > 23°C	Admissible power acceptance at higher ambient temperature see derating curves
Line Switch	Rocker switch 2-pole, non-illuminated, acc. to IEC 61058-1 Technical details
Line Filter	Standard and Medical Version, IEC 60939, IEC 60601-1, UL 1283, UL 544, EN 133 200, CSA C22.2 no. 8 Technical details
MTBF	> 2'000'000 h acc. to MIL-HB-217 F

Dimensions
 Screw version


- 1) all terminals with 1.25 x 0.8
 2) Quick connect terminal 6.3 x 0.8

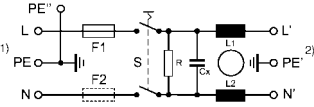
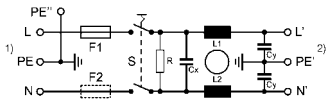
Technical Data of Filter-Components

Rated Current [A]	Filter-Type	Inductances		Capacitance		R [MΩ]
		L [mH]	CX [nF]	CY [nF]		
1	Standard Version	2 x 10	100	2.2	1	
2	Standard Version	2 x 4	100	2.2	1	
4	Standard Version	2 x 1.5	100	2.2	1	
6	Standard Version	2 x 0.8	100	2.2	1	
10	Standard Version	2 x 0.3	100	2.2	1	
1	Medical Version (M5)	2 x 10	100	-	1	
2	Medical Version (M5)	2 x 4	100	-	1	
4	Medical Version (M5)	2 x 1.5	100	-	1	
6	Medical Version (M5)	2 x 0.8	100	-	1	
10	Medical Version (M5)	2 x 0.3	100	-	1	

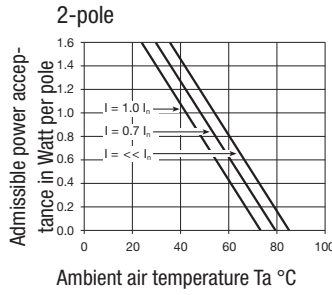
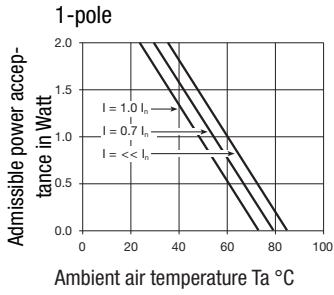
Diagrams

Filter Standard
non illuminated

Filter Medical M5
non illuminated



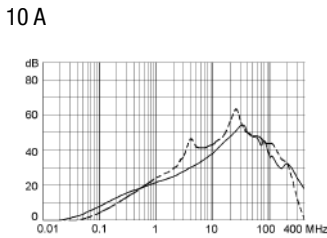
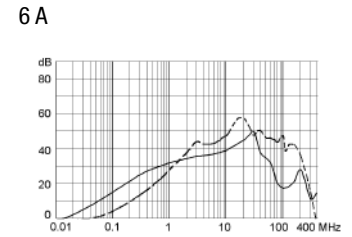
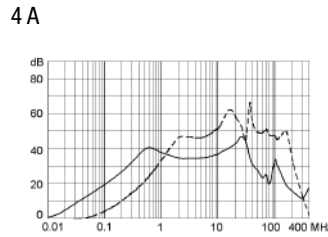
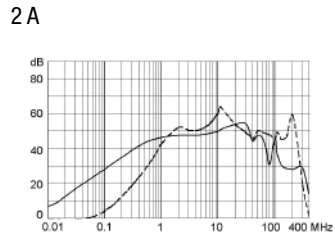
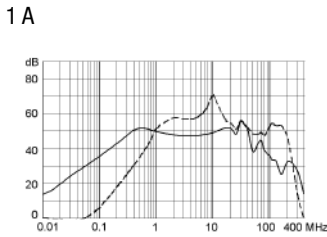
Derating curves



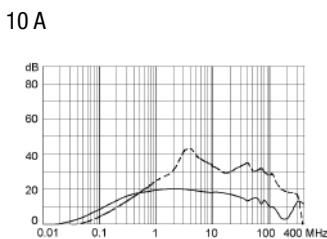
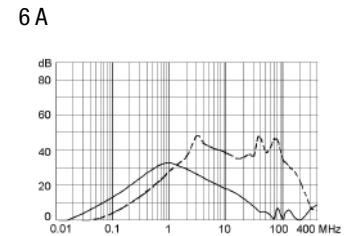
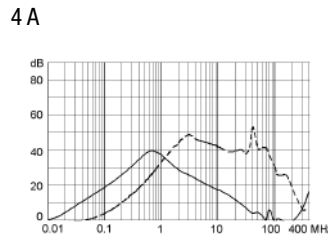
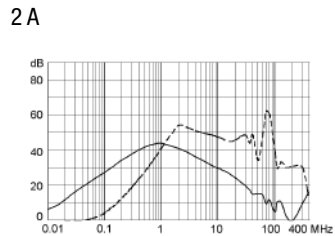
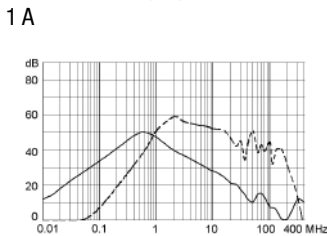
Attenuation loss

--- differential mode ____ common mode

Standard version



Medical version (M5)



Variants

Fuse drawer must be ordered separately (See accessories).
Fingerrip and Extra Safe. The same drawer as used by type KEA.

Rated Current [A]	Filter-Type	Fuseholder	Line Switch	Order Number
1	Standard Version	2-pole	2-pole	DD22.1121.1111
2	Standard Version	2-pole	2-pole	DD22.2121.1111
4	Standard Version	2-pole	2-pole	DD22.4121.1111
6	Standard Version	2-pole	2-pole	DD22.6121.1111
10	Standard Version	2-pole	2-pole	DD22.9121.1111
1	Medical Version (M5)	2-pole	2-pole	DD22.1321.1111
2	Medical Version (M5)	2-pole	2-pole	DD22.2321.1111
4	Medical Version (M5)	2-pole	2-pole	DD22.4321.1111
6	Medical Version (M5)	2-pole	2-pole	DD22.6321.1111
10	Medical Version (M5)	2-pole	2-pole	DD22.9321.1111

Packaging unit 20 Pcs

Required Accessory

Description



Fusedrawer 2