

Inlet with filter for front side mounting, fuse 1-/2-pole, line switch 2-pole

Standard- or Medical-Filter



new



C14



70° C



Description

- Panel Mount:
 - Screw-on from front side
- 4 Functions:
 - Inlet Protection class I, Line switch 2-pole, Fuseholder for fuse-links 5 x 20 mm 1- or 2-pole, Line filter in standard and medical version
- Quick connect terminals 6.3 x 0.8 mm
- Alternative: version without line filter [DD11](#)
- Alternative: version for snap-in mounting [KMF](#)

Characteristics

- Ultra-compact design. Ideal for low profile designs
- Aluminum case provides good shielding
- All single elements are already wired
- Fuse drawer meets requirements of medical standard IEC/EN 60601-1
- The fuseholder is accessible from the equipment front
- For added safety "Extra-Safe" fuse drawers are available
- Ideal for application with high transient loads
- Designed for standard and medical applications
- Qualified for use in equipment according IEC/EN 60950

Other versions on request

- Solder terminals
- Fuse drawer 1-pole, plus spare fuse case
- Fuse drawer 2-pole, with shorting bar
- Other rocker marking
- Line switch, illuminated
- Line switch 1-pole
- Medical version M80
- Class X1- and Y1-capacitors for enhanced withstand voltage
- Protection class II, 70°C

References

[General Product Information](#)

Weblinks

Approvals: www.schurter.com/approvals
 RoHS: <http://www.schurter.com/rohs>
 CHINA-RoHS: www.schurter.com/china-rohs
 Webstore: www.schurterinc.com/estore/search.ihtml

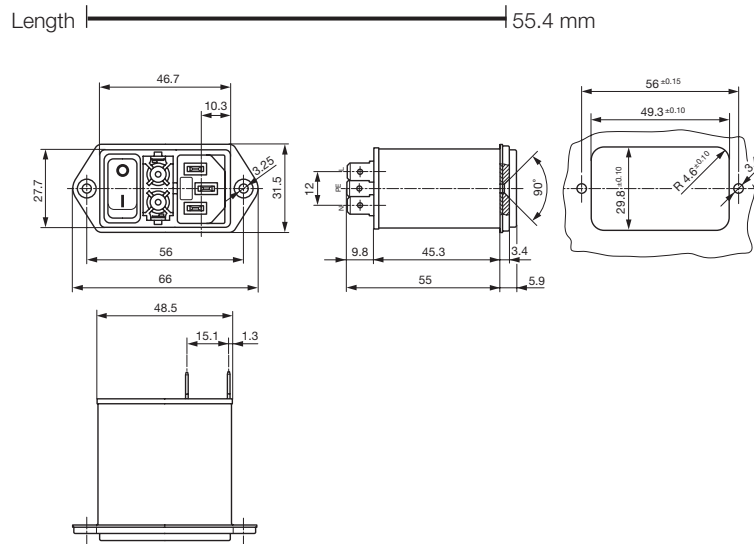
Technical Data

| | |
|---------------------------|--|
| Ratings IEC | 1 - 10A @ Ta 40 °C / 250VAC; Hz 50 |
| Ratings UL/CSA | 1 - 8A @ Ta 40 °C / 125/250VAC; 60Hz |
| Leakage Current | standard < 0.5 mA (250 V / 60Hz) medical < 5 µA (250 V / 60 Hz) |
| Dielectric Strength | > 1.7 kVDC between L-N > 2.7 kVDC between L/N-PE Test voltage (1 min/50Hz) |
| Allowable Operation Temp. | -25 °C to 85 °C |
| Climatic Category | 25/085/21 acc. to IEC 60068-1 |
| Degree of Protection | from front side IP 40 acc. to IEC 60529 |
| Protection Class | Suitable for appliances with protection class I acc. to IEC 61140 |
| Terminal | Quick connect terminals 6.3 x 0.8 mm |
| Panel Thickness | Screw-on: max 8mm Mounting screw torque max 0.5Nm |
| Material: Housing | Thermoplastic, black, UL 94V-0 |

| | |
|-----------------------------------|---|
| Appliance-Inlet /-Outlet | C14 acc. to IEC/EN 60320-1 UL 498, CSA C22.2 no. 42 (for cold condition) pin-temperature 70 °C, 10A, Protection class I |
| Fuseholder | 1 or 2 pole, Shocksafe category PC2 acc. to IEC 60127-6, for fuse-links 5 x 20mm |
| Rated Power Acceptance @ Ta 23 °C | 5 x 20: 2W (1 pole)/ 1.6W (2-pole) per pole |
| Power Acceptance @ Ta > 23°C | Admissible power acceptance at higher ambient temperature see derating curves |
| Line Switch | Rocker switch 2-pole, non-illuminated, acc. to IEC 61058-1 Technical details |
| Line Filter | Standard and Medical Version, IEC 60939, IEC 60601-1, UL 1283, UL 544, EN 133 200, CSA C22.2 no. 8 Technical details |
| MTBF | > 2'000'000h acc. to MIL-HB-217 F |

Dimensions

Screw version



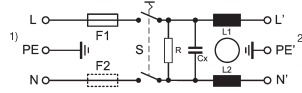
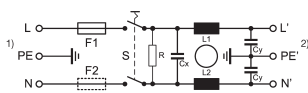
Technical Data of Filter-Components

| Rated Current [A] | Filter-Type | Inductances L [mH] | Capacitance CX [nF] | Capacitance CY [nF] | R [MΩ] |
|-------------------|----------------------|--------------------|---------------------|---------------------|--------|
| 1 | Standard Version | 2 x 10 | 100 | 2.2 | 1 |
| 2 | Standard Version | 2 x 4 | 100 | 2.2 | 1 |
| 4 | Standard Version | 2 x 1.5 | 100 | 2.2 | 1 |
| 6 | Standard Version | 2 x 0.8 | 100 | 2.2 | 1 |
| 8 | Standard Version | 2 x 0.6 | 100 | 2.2 | 1 |
| 10 | Standard Version | 2 x 0.3 | 100 | 2.2 | 1 |
| 1 | Medical Version (M5) | 2 x 10 | 100 | - | 1 |
| 2 | Medical Version (M5) | 2 x 4 | 100 | - | 1 |
| 4 | Medical Version (M5) | 2 x 1.5 | 100 | - | 1 |
| 6 | Medical Version (M5) | 2 x 0.8 | 100 | - | 1 |
| 8 | Medical Version (M5) | 2 x 0.6 | 100 | - | 1 |
| 10 | Medical Version (M5) | 2 x 0.3 | 100 | - | 1 |

Diagrams

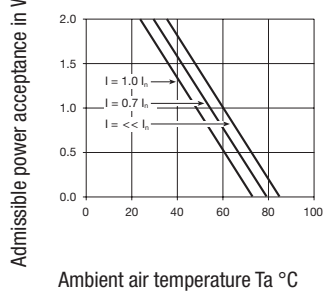
Filter Standard
non illuminated

Filter Medical M5
non illuminated

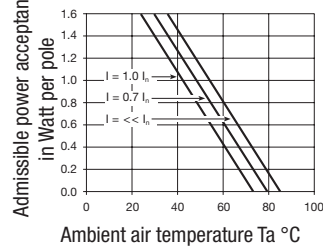


Derating Curves for Fuseholders

1-pole



2-pole

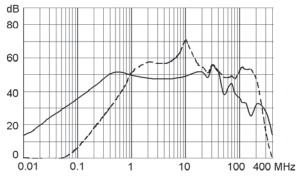


Attenuation loss

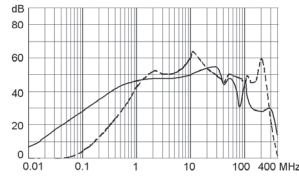
--- differential mode — common mode

Standard version

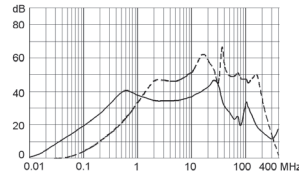
1 A



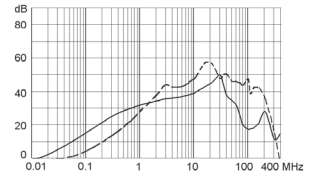
2 A



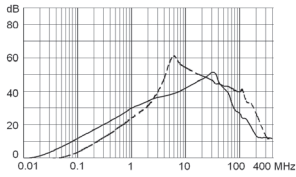
4 A



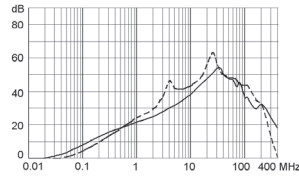
6 A



8 A

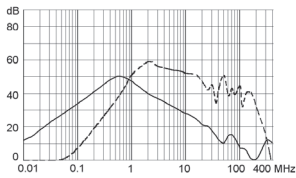


10 A

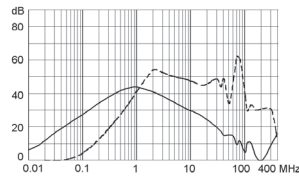


Medical version (M5)

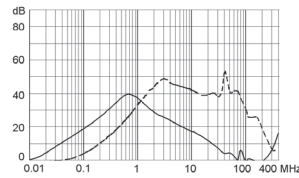
1 A



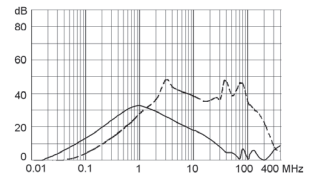
2 A



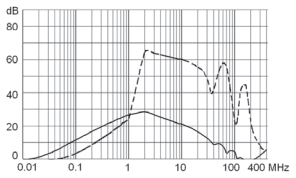
4 A



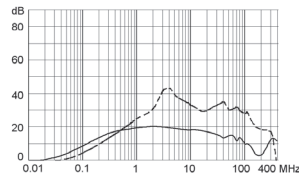
6 A



8 A



10 A



Variants

[Webstore](#)

Fuse drawer must be ordered separately (see accessories).
Fingergrip and Extra Safe. The same drawer as used by type KEA.

| Rated Current [A] | Filter-Type | Fuseholder | Line Switch | Order Number |
|-------------------|----------------------|------------|-------------|---------------|
| 1 | Standard Version | 1 pole | 2-pole | DD12.1111.111 |
| 2 | Standard Version | 1 pole | 2-pole | DD12.2111.111 |
| 4 | Standard Version | 1 pole | 2-pole | DD12.4111.111 |
| 6 | Standard Version | 1 pole | 2-pole | DD12.6111.111 |
| 8 | Standard Version | 1 pole | 2-pole | DD12.8111.111 |
| 10 | Standard Version | 1 pole | 2-pole | DD12.9111.111 |
| 1 | Standard Version | 2-pole | 2-pole | DD12.1121.111 |
| 2 | Standard Version | 2-pole | 2-pole | DD12.2121.111 |
| 4 | Standard Version | 2-pole | 2-pole | DD12.4121.111 |
| 6 | Standard Version | 2-pole | 2-pole | DD12.6121.111 |
| 8 | Standard Version | 2-pole | 2-pole | DD12.8121.111 |
| 10 | Standard Version | 2-pole | 2-pole | DD12.9121.111 |
| 1 | Medical Version (M5) | 2-pole | 2-pole | DD12.1321.111 |
| 2 | Medical Version (M5) | 2-pole | 2-pole | DD12.2321.111 |
| 4 | Medical Version (M5) | 2-pole | 2-pole | DD12.4321.111 |
| 6 | Medical Version (M5) | 2-pole | 2-pole | DD12.6321.111 |
| 8 | Medical Version (M5) | 2-pole | 2-pole | DD12.8321.111 |
| 10 | Medical Version (M5) | 2-pole | 2-pole | DD12.9321.111 |

Packaging unit 20 Pcs

Required Accessory

Description

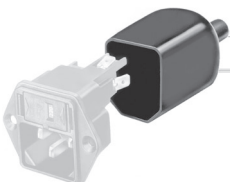


Fusedrawer 2
Fusedrawer with and without voltage selector insert

Accessory



Cord retaining kits
Cord retaining strain relieve



Assorted Covers
Rear Cover