

## Mini-ITX Series

NEW

VIA

# EPIA-M830

Mini-ITX Nano™ Board with  
MPEG-2 & 4/DivX & WMV9/  
VC1, IDE, SATA, GigaLAN,  
COM, Mini-PCIe & PCIe

## Features

- Integrated VIA Chrome9™ HC3 DX9 3D/2D graphics with MPEG-2/4 and WMV9 decoding acceleration
- Supports one IDE and two SATA
- Supports one Gigabit Ethernet
- Supports one digital I/O
- Supports five USB 2.0 ports
- Supports four COM ports (three as pin headers)
- Supports one 4-lane PCIe and one Mini-PCIe socket
- Supports one dual-channel 24-bit LVDS panel



## Board Placement

ATX power connector

COM

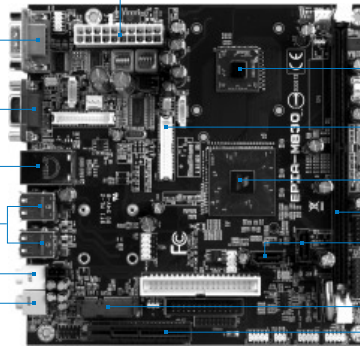
VGA

RJ-45

4 x USB

Line-out

Mic-in



VIA Nano™ processor

LVDS

VIA VX800 chipset

DDR2 667/800 SDRAM DIMM

2 x SATA

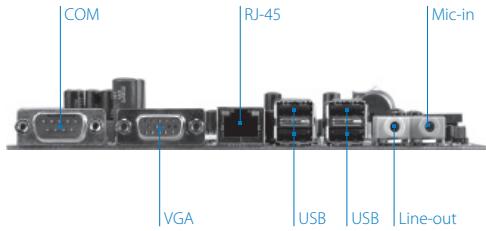
Mini-PCIe socket

PCIe x 4

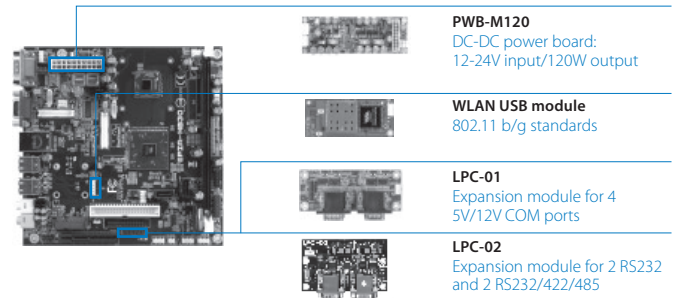
## Specifications

Model Name	EPIA-M830-13V	EPIA-M830-10VE
<b>Processor</b>	1.3GHz VIA Nano™ (with fan)	1.0GHz VIA Nano™ (fanless)
<b>Chipset</b>	VX800 Unified Digital Media IGP chipset	
<b>Super I/O</b>	VIA VT1211	
<b>System Memory</b>	DDR2 533/667 DIMM socket Up to 2GB memory size	
<b>VGA</b>	Integrated VIA Chrome9™ HC3 DX9 3D/2D graphics with DivX, VC1, MPEG-2/4, WMV9 decoding acceleration	
<b>Onboard IDE</b>	1 x UltraDMA 133/100 pin connector with 2.54mm 40-pin	
<b>Onboard Serial ATA</b>	2 x SATA connectors (pin#7 powered with selectable GND/5V)	
<b>Onboard LAN</b>	1 x VIA VT6130 Gigabit LAN controller	
<b>Onboard Audio</b>	VIA VT1708S High Definition Audio Codec	
<b>Onboard I/O Connectors</b>	1 x USB port 1 x Front audio pin header 1 x Line-in pin header 1 x PS/2 keyboard/mouse pin header 3 x RS-232 pin header (powered with selectable 5V/12V) 1 x LPT pin header 1 x LPC pin header 1 x SMBUS pin header 1 x S/PDIF-out pin header 1 x FIR 1 x Digital I/O (GPI x 4 + GPO x 4) 1 x Front panel pin header 2 x Fan connectors for CPU/Sys 1 x Mini-PCIe socket to support Mini-PCIe/USB devices 1 x PCIe x4 slot 1 x 18bit TTL reserved (DVP, manufacturing option) 1 x LVDS connector, for 24-bit dual channel LVDS panel 1 x ATX power connector	
<b>Rear I/O Connectors</b>	1 x VGA connector 2 x USB 2.0 connectors 1 x 1 RJ-45 & 2 USB 2.0 LAN connector 2 x Audio jacks (Line-out, Mic-in) 1 x RS-232 connector (powered with selectable 5V/12V)	
<b>BIOS</b>	Award BIOS 8Mbit SPI Flash ROM	
<b>System Monitoring &amp; Management</b>	Keyboard Power-on, Timer Power-on System power management, AC power failure recovery Wake-on LAN, Watch Dog Timer	
<b>Operating System</b>	WinCE, XP, XPe, Linux	
<b>Operating Temperature</b>	0°C up to 50°C	
<b>Operating Humidity</b>	0% ~ 95% (relative humidity; non-condensing)	

## Back Panel I/O



## Accessories



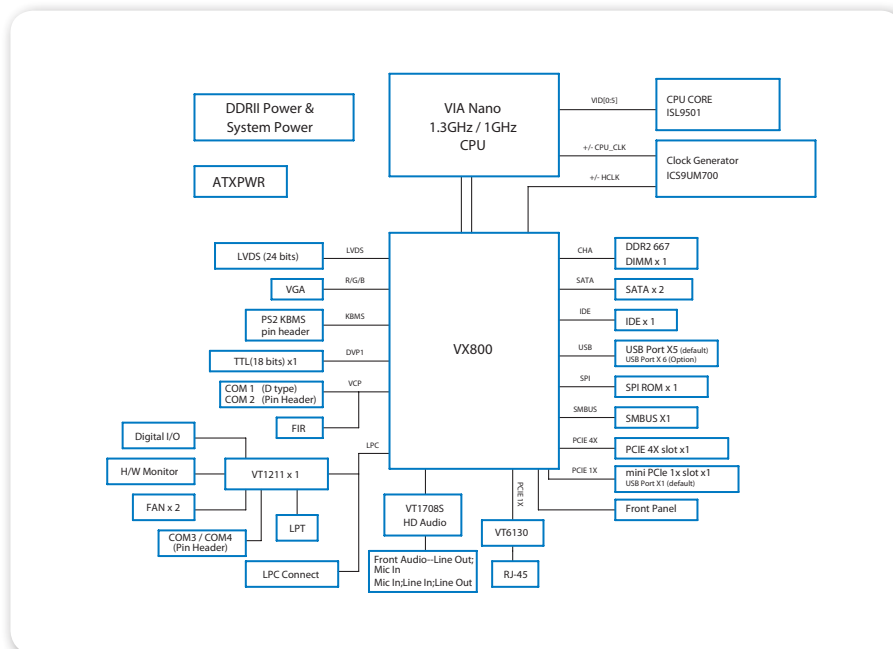
## Specifications

Model Name	EPIA-M830-13V	EPIA-M830-10VE
Form Factor	Mini-ITX 17 cm x 17 cm	
Compliance	CE/FCC/RoHS	

## Ordering Information

Model Name	CPU Frequency	Description
M830-13V	1.3GHz Nano™	Mini-ITX Board with 1.3GHz Nano™ CPU, 1 PCIe x4, 1 Mini-PCIe, 4 COMs, 1 GLAN, 1 LVDS
M830-10VE	1.0GHz Nano™	Mini-ITX Board with 1.0GHz Nano™ CPU, 1 PCIe x4, 1 Mini-PCIe, 4 COMs, 1 GLAN, 1 LVDS

## Block Diagram



## Packing List

Items
1 x SATA cable
1 x PS/2 cable
1 x Driver Utility CD
1 x I/O Bracket